
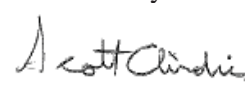




<b>Customer File No:</b> LR1123	<b>Report No:</b> LR1123-3	<b>Issue Date:</b> November 3, 2011
Issued By: George Shu 	Reviewed By: Scott Airdrie 	
<b>Customer Name:</b> Nanoptix Inc.	<b>Address:</b> 699 Champlain Street, Dieppe, New Brunswick, Canada E1A 1P6	
Contents: Certificate of Conformity: 1 Page; Report: Pages 1 to 14 Photos: Pages 6-12		

Project No. and Date	Revised By	Reviewed By	Pages:	Description of Changes:
LR1123-3 November 3, 2011	--	--	--	Original report. Transfer from QPS/SGS report number LRE1123-3/1991497

**SUBJECT**

Desktop thermal printer, model Spill-Proof™ (model number 100769). Class III. Rated 24Vdc, 2.5A. Water ingress protection IPX3.

Desktop thermal printer, model Spill-Proof Cuts™ (model number 102447). Class I. Rated 100-240Vac, 1.6A, 50-60Hz. Water ingress protection IPX1.

**APPLICABLE STANDARDS**

The product was tested/evaluated to the following standards:

- Information Technology Equipment – Safety – Part 1: General Requirements, CSA C22.2 No. 60950-1-07, Second Edition, Dated March 27, 2007.
- Information Technology Equipment – Safety – Part 1: General Requirements, UL 60950-1 Second Edition, Dated March 27, 2007.

## MARKINGS

### On the Equipment Exterior:

Equipment is plainly marked in a permanent manner in a place where the details will be readily visible after the installation with the following:

1. Markings – The product is marked using lettering on a pressure-sensitive label as described in this report.

### On the Equipment Exterior:

Equipment is plainly marked in a permanent manner in a place where the details will be readily visible after installation with the following:

The following markings are required:

- The cQPSus Certification Mark; the letter “C” must appear in the 8 O’clock position and the letters “US” must appear in the 4 O’clock position adjacent to the QPS Certification Mark;
- The qualifying statement ”Electrical Safety” or the equipment standard number must appear directly below the Certification Mark;



- applicant's identification - company name, trademark or QPS file reference (LR1123);
- Model designation;
- date code/serial number;
- complete electrical ratings – (V, Hz, A)
- Water ingress protection marking

Installation, Operating and Safety Instructions – Safety instruction of this product is provided by the manufacturer as required by the standard.

**DESCRIPTION**

The product is a desktop thermal printer.

1. Model Spill-Proof™ (model number 100769): Class III. Rated 24Vdc, 2.5A supplied by an approved external Limited Power Source power adaptor. Water ingress protection IPX3.
2. Model Spill-Proof Cuts™ (model number 102447). Class I. Rated 100-240Vac, 1.6A, 50-60Hz. Water ingress protection IPX1.  
The equipped power supply adaptor is an approved component.

**POWER CONNECTIONS**

For model Spill-Proof™: DC jack, supplied by an approved external Limited Power Source power adaptor with an output rating of 24Vdc, 2.5Amps.  
For model Spill-Proof Cuts™: AC inlet.

**INTERNAL WIRING**

All internal wiring is certified and is reliably routed and secured away from sharp edges having a radius less than 1.5mm.

**FACTORY TESTS: N/A**

No manufacturing or production line tests are required because the model Spill-Proof is powered through an approved SELV Power Supply, and the model Spill-Proof Cuts incorporates an approved external power supply (installed within enclosure).

**Tests**

The model was presented as a representative sample of the product and subjected to the test requirements of CSA C22.2 No. 60950-1-07, Second Edition, Dated March 27, 2007, UL 60950-1 Second Edition, Dated March 27, 2007 with satisfactory results under project LRE1123-3 dated April 29, 2010.

The following tests were performed as specified under project LRE1123-3 dated April 29, 2010. No further tests were considered necessary.

UL60950-1/CSA-C22.2 No. 60950-1-07 CLAUSE NO.	INFORMATION
1.6.2	Input Current
1.7.13	Durability Test
4.4	Stability (model Spill-proof cuts only)
4.5.1	Heating test
5.3	Abnormal operation and fault conditions
Annex T	Protection against ingress of water (IPX1 Test) (model Spill-proof cuts only)
Annex T	Protection against ingress of water (IPX3 Test) (model Spill-proof only)

The test methods and results of the above tests have been reviewed and found in compliance with the requirements in CSA C22.2 No. 60950-1-07 and UL 60950-1 Second Edition, Dated March 27, 2007.

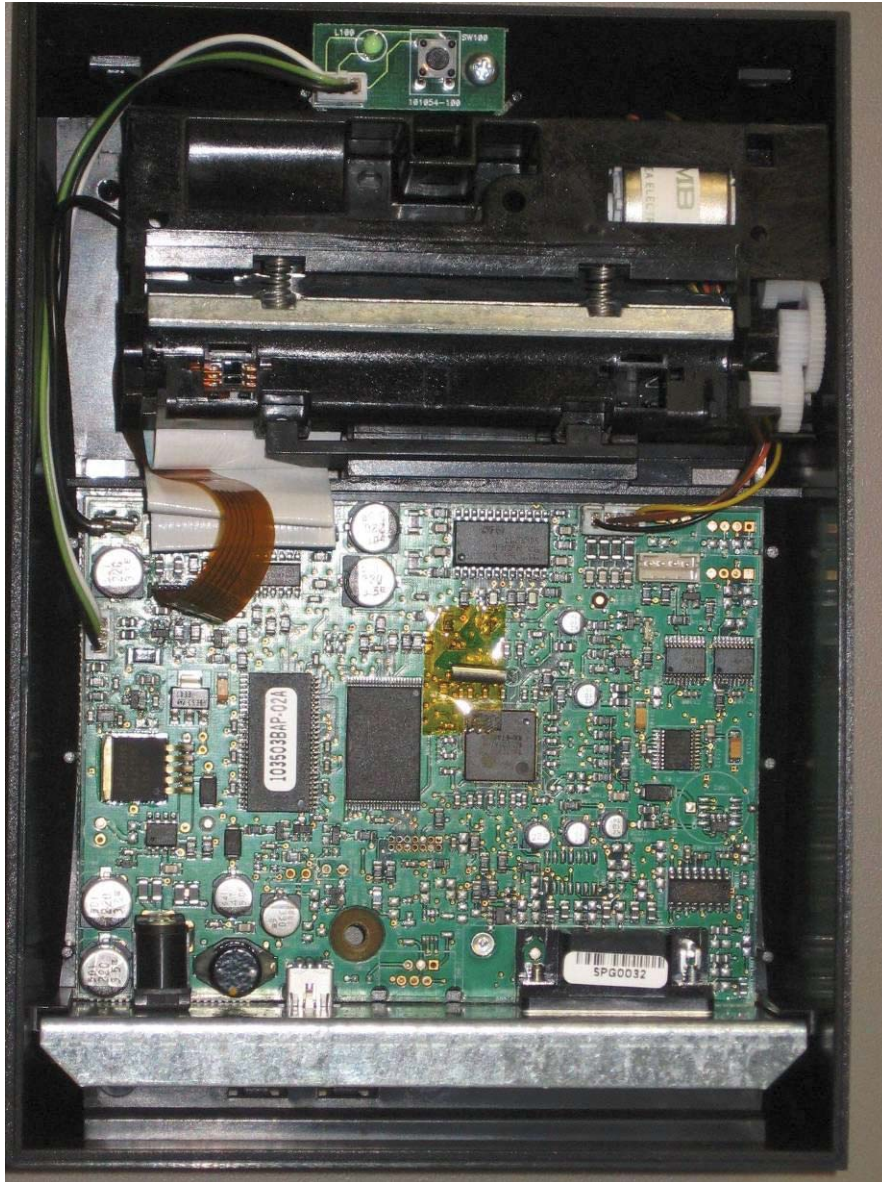
**Critical Components Table**

Component (Customer P/N)	Manufacturer	Mfg P/N	Technical Description / Ratings (electrical/other)	Mark(s) of conformity <sup>1</sup>
Model Spill-Proof™				
Power cord set	+Various	Various	Plug: NEMA 5-15, 125V, 10A; Cord: 18AWG x 3C, VW-1, 105°C; coupler: 125V, 10A	UL, CSA
Power supply adaptor	+ GLOBTEK INC	GT-21126-6024 (Part No: 270005-0001R)	Input: 100-240V~, 1.6A, 50-60Hz; Output: +24Vdc, 2.5A, LPS	cULus (E170507)
Plastic enclosure	+ Cheil Industries Inc.	VB-1008+	HB min, 130mm x 110mm x 180mm	cURus (E115797)
Printer Assembly	Axiohm	MHTPGS24H	DC 24 V	Evaluated with end product
DC stepping motor	Minebea Electronic Co Ltd. (NMB)	PM20L-020-AXH2	DC 24V, 100MΩ, 120°C	Evaluated with end product
PCB	+Various	Various	V-0, 105°C	UL, CSA
Model Spill-Proof Cuts™				
Power cord set	+Various	Various	Plug: NEMA 5-15, 125V, 10A; Cord: 18AWG x 3C, VW-1, 105°C; coupler: 125V, 10A	UL, CSA
Power supply adaptor	+ GLOBTEK INC	GT-21126-6024 (Part No: 270005-0001R)	Input: 100-240V~, 1.6A, 50-60Hz; Output: +24Vdc, 2.5A, LPS	cULus (E170507)
Plastic enclosure	+ DUPONT	SK652FR1	HB min, 230 mm by 175 mm by 142 mm, 2.9 mm thick	cURus (E41938)
Printer Assembly	FUJITSU	FTP-639CT081	DC 24 V	Evaluated with end product
Note: “+” preceding the manufacturer’s name denotes a Certified component that can be interchanged for one from another Certified source provided that it has an equivalent or better electrical rating, and the same terminal orientation.				

**Photo 1 - Printer upright and power supply adaptor - model Spill-Proof™**







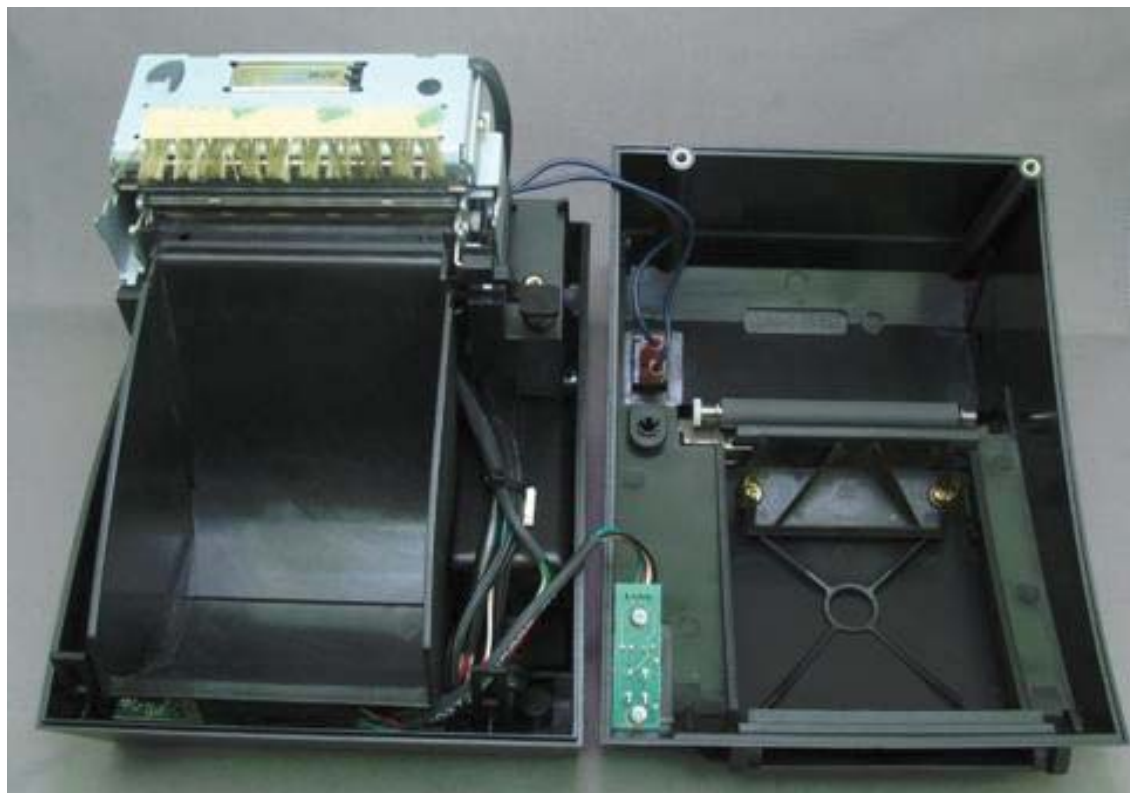
**Photo 4 - Printer upright and cover open - model Spill-Proof Cuts™**



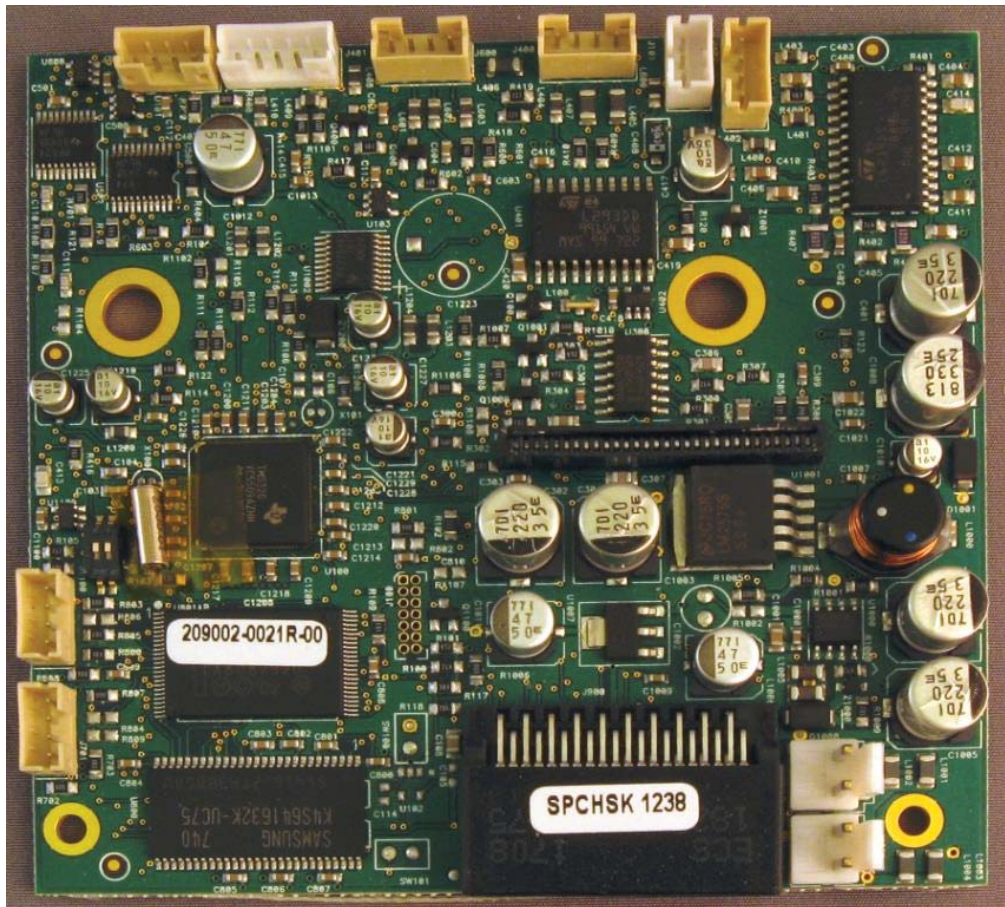
**Photo 5 – Printer rear and bottom view - model Spill-Proof Cuts™**



**Photo 6 – Cover open and removed - model Spill-Proof Cuts™**



**Photo 7 – Printed Wiring Board - model Spill-Proof Cuts™**



**Evaluation of Unlisted Components**

Because unlisted components are uncontrolled, and they do not fall under a third party follow up program, QPS may require these components to be tested and/or evaluated at least once annually, more often for certain components, as part of the independent certification process. The unlisted components in the table below require testing and/or evaluation as indicated.

**Note to QPS Follow Up Inspector: The testing laboratory will notify you in writing when these components must be selected and sent to the laboratory for re-evaluation**

Ship the samples to: QPS Evaluation Services Inc.  
81 Kelfield St. Unit 81  
Toronto Ontario  
Canada  
M9W 5A3

Sample Disposition: Due to the destructive nature of the testing, all samples will be discarded at the conclusion of testing unless, the manufacturer specifically requests the return of the samples. The request for return **must** accompany the initial component shipment.

The Unlisted Components covered by this report are shown in the following Table:

Photo No.	Component Description	Manufacturer	Catalog No.	Frequency*	Qty <input type="checkbox"/>	Send to Lab (YES or NO)	Required Action***
							None

\* Quarterly, semi-annual, annual.

\*\* Note: Indicate any samples not available and provide the anticipated date that the component will be available.

\*\*\* Required Action (select one of the three):  
 Visual  
 Partial  
 Full Evaluation

Note:

Visual means the quarterly verification of the description of the unlisted component in the report is sufficient for Certification.